



POMONA CATHOLIC MIDDLE SCHOOL DRESS CODE

FOR MORE INFORMATION ON DRESS CODE GUIDELINES PLEASE REFER TO OUR **PARENT STUDENT HANDBOOK**.

LOG-ON TO WWW.DENNISUNIFORMS.COM TO PURCHASE YOUR UNIFORM. USE HS CODE: **ANPVCM**

BOYS



PC POLO
IN WHITE OR NAVY
* WHITE IS PART OF
THE MASS UNIFORM



SHORT OR PANTS
DENNIS UNIFORM
KHAKI ONLY



CREW SOCKS
IN BLACK, WHITE
OR NAVY ONLY

PCMS SWEATSHIRT
CREWNECK FROM DENNIS UNIFORM

CARDIGAN SWEATER
PULL OVER OR BUTTON FRONT IN NAVY
OR GREEN FOR BOYS AND GIRLS



SHOES
SOLID BLACK LOW-TOP ATHLETIC
OR DRESS SHOES. NO HIGH-TOPS,
PLATFORMS, CHECKERED, OR STRIPED.
WHITE OR BLACK SOLE AND LACES.

EXAMPLES:



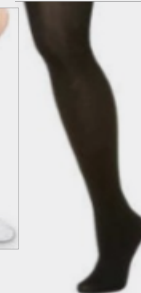
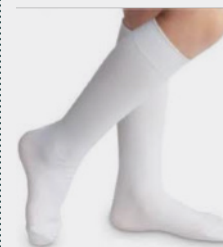
GIRLS



PC POLO
IN WHITE OR NAVY
* WHITE IS PART OF
THE MASS UNIFORM



SKIRT
HOP-STITCHED OR
BOX-PLEAT SKIRT
* WORN NO SHORTER
THAN 2" ABOVE THE KNEE
* PART OF THE
MASS UNIFORM



**CREW, KNEE HIGH
OR TIGHTS**
IN BLACK, WHITE
OR NAVY ONLY